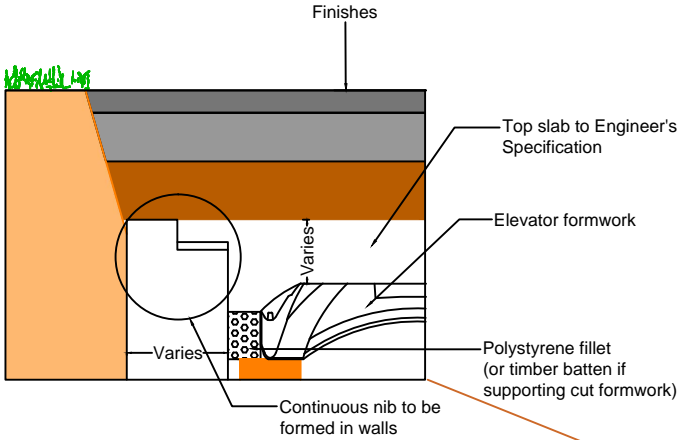
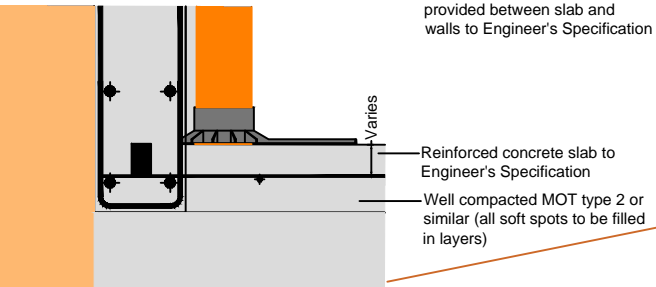


DETAIL A



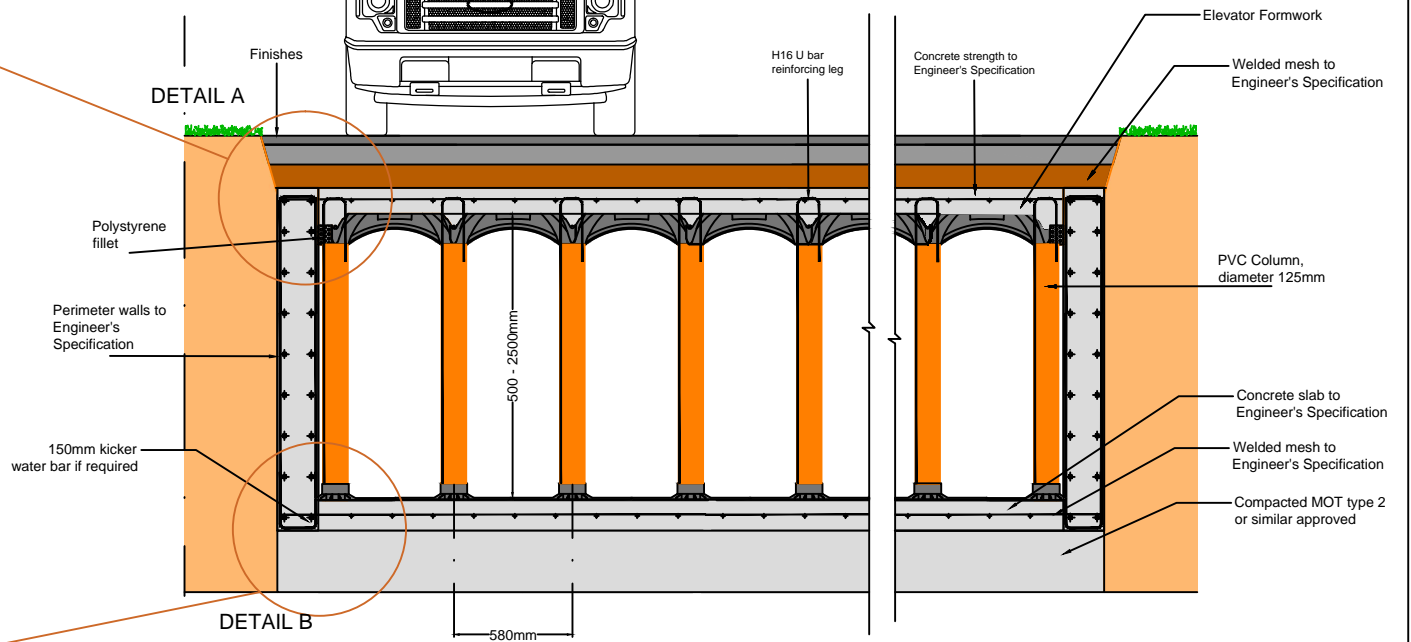
- Notes:
- Reinforcement not shown for clarity
 - All design work is to be undertaken by a suitably qualified civil or structural engineer

DETAIL B



- Notes:
- Reinforcement not shown for clarity
 - All design work is to be undertaken by a suitably qualified civil or structural engineer

DETAIL A



DETAIL B

Stormwater Management

Fleming Road, Harrowbrook Industrial Estate,
Hinckley, Leicestershire. LE10 3DU
Tel: 01455 502222 Fax: 01455 502223 www.storm-water.co.uk

TITLE:

Elevator typical Cross Section

DRAWN BY:

ZS

SCALE

NTS

DATE

21/12/2016

CHECKED BY

NRW

Ref:

STW-EVL-01

Version:

V1

Sheet

